



An Introduction to the APHIS / BLM Wild Horse and Burro Partnership

**Albert J. Kane, DVM, MPVM, PhD
Senior Staff Veterinarian and Advisor
APHIS / BLM WH&B Partnership
Jan 2025**



Today's Topics

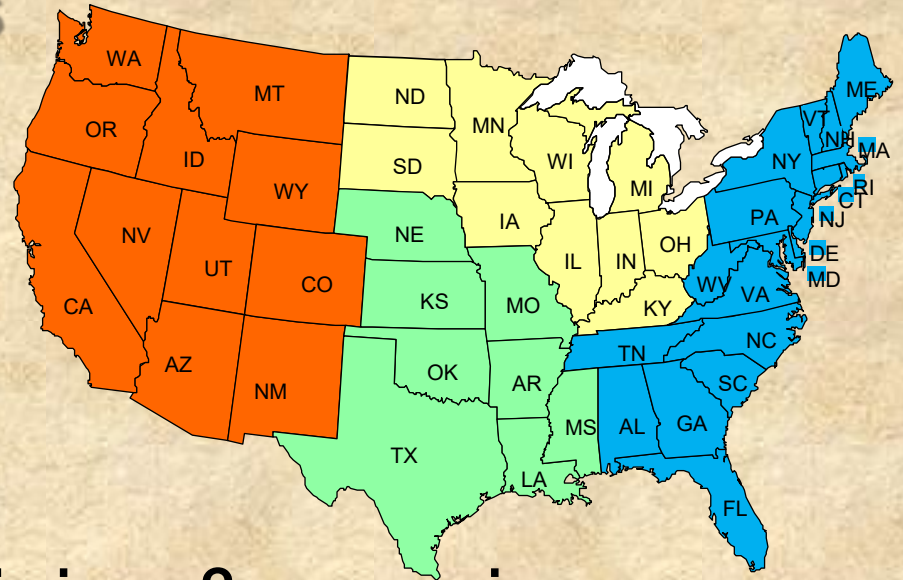
- Who is APHIS
- What is the APHIS/BLM WH&B Partnership
 - History of Partnership
 - Who, What, When and Where
 - examples of activities on-the-range, gathers, facilities, adoptions, post adoption compliance




- Animal & Plant Health Inspection Service (APHIS)

- **Veterinary Services**

- Surveillance & Preparedness
- Field Operations
- ~ 200 Veterinarians
- ~ 64 with WH&B training & experience



APHIS/BLM Wild Horse and Burro Partnership

- 
- 1996 brainchild of Dr. Katie Blunk and BLM's Joe Stratton
 - Drs. Goeldner, Cordes, Hatcher
 - since 1999, MOU
 - reimbursable agreement

APHIS / BLM Partnership

- MOU started in 1999
 - BLM utilize APHIS (primarily VS) for assistance & consultation re. health and handling of WH&B
 - initial emphasis on local support for field activity
- Inter Agency Agreement (reimbursable)
 - BLM pays for APHIS' work after it is done
 - salary, travel, per diems, supplies etc.
 - no year \$\$ stay at BLM after they are obligated
 - BLM billed quarterly *after* the work is performed

APHIS / BLM Partnership

- offers BLM
 - National network of unbiased veterinary expertise
 - field work
 - National Program activity
- offers APHIS
 - “one health” opportunity to be more active in horse industry
- offers animals
 - enhanced care and handling



Components of the Program

- Range
- Gathers
- Facilities
 - on and off range
- Adoptions & Sales
 - compliance, titling
- policy, research



APHIS / BLM Partnership

2 Parts:

1) Headquarters Activities

- a) Policy and Procedures
- b) Facilities
- c) Research, CAWP

2) Field Work

- a) Gathers
- b) Facilities
- c) WH&B Specialists in field



Examples of the APHIS Partnership

- animal health, care and handling
 - policy
 - communications
- Research Team
- CAWP Audits
- gather support
- compliance work
- regulatory guidance
 - regulatory support



APHIS on the Range

- APHIS attends all helicopter gathers
- respond to concerns re. disease situations
 - health and welfare at herd and individual level
- help triage gather emergencies
- assist with research projects and fertility control



APHIS at Gathers

- 1° observe and document animal care / handling
- consultation on emergency care and euthanasia
- facilitate compliance with animal health regs
- consult on emergency first aid
 - triage for private practitioners
- assist with:
 - CAWP compliance / audits
 - research sampling
 - fertility control application



APHIS at Work with BLM in FY2024

- 33 veterinarians spent **55 weeks on 22 gathers** in 8 states
 - another 64 weeks of gathers were planned or scheduled but either ended early (16 gathers) or were cancelled (5 gathers)
- **6 weeks spent on CAWP work** with BLM Team
 - Included 5 by AJK and one by an APHIS Field VMO
- 14 veterinarians did **35 ORP inspections** in 11 states with BLM Project Inspectors
- delivered 4 training sessions for BLM Specialists

APHIS in Facilities

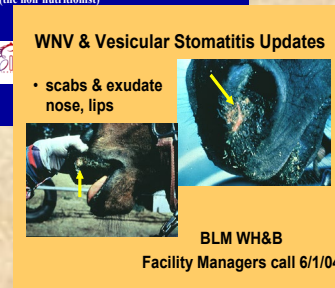
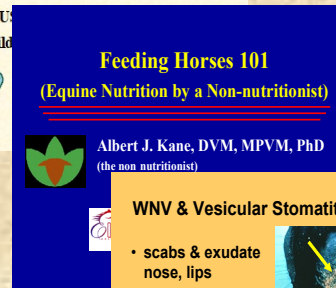
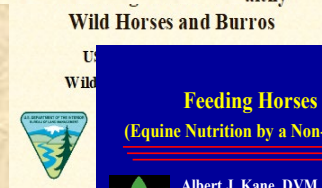
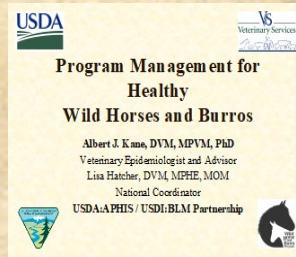
Health and Welfare

- assist with problem investigation
- second opinion, consultations
 - mortality, infectious dz
 - TPEC review
- assist with ORP visits
- facility design
 - inspection of new facilities



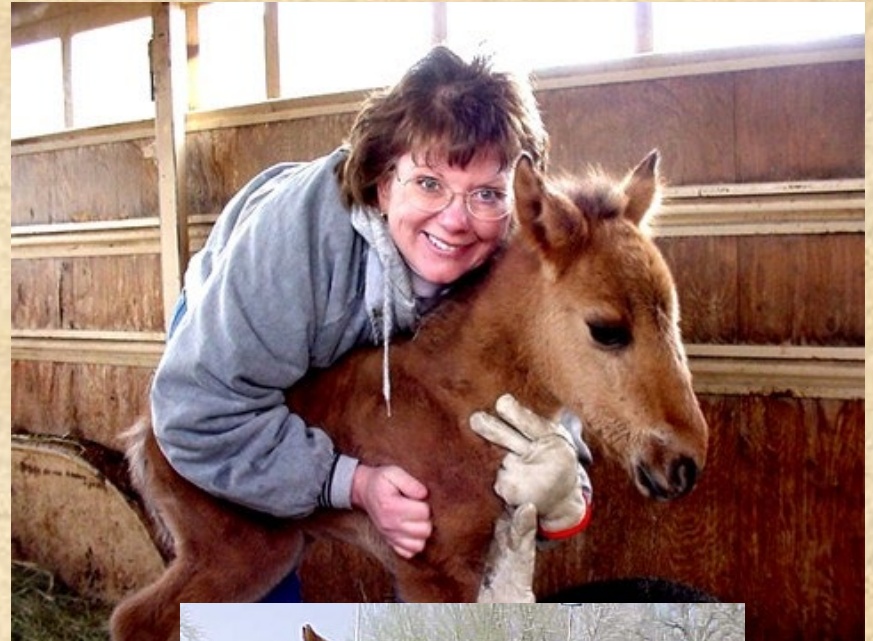
APHIS at Adoptions

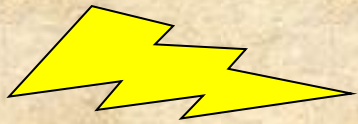
- educational programs
 - for BLM, adopters, public



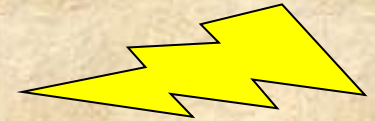
APHIS and Compliance

- adoptive homes checked by APHIS
 - where BLM has limited resources
- title inspections
- complaint investigations
 - education
 - rapid response





Changes Over Time



- **APHIS responds to changes in the WH&B Program's needs as requested**
- initial focus was on field activities
- early 2000s emphasis on research and HQ support
 - National WH&B Research Team, Research Strategy, Field Trial Plan
- 2010 increased APHIS support of gather activities
 - outside expert panel reviews, CAWP, veterinarian for every gather
- 2014 more animal health consultations at facilities
- today more emphasis on welfare and BLM's social license to operate

Today and Into the Future

- **currently 3½ years into 5-year Agreement**
 - annual spending ranges from about \$300K to \$750K depending on workload
 - BLM has requested we **renew** the agreement early (**before July 2025**) due to a change in management software
- in the future APHIS will continue to assist the Program as requested and whenever possible

Questions ?

