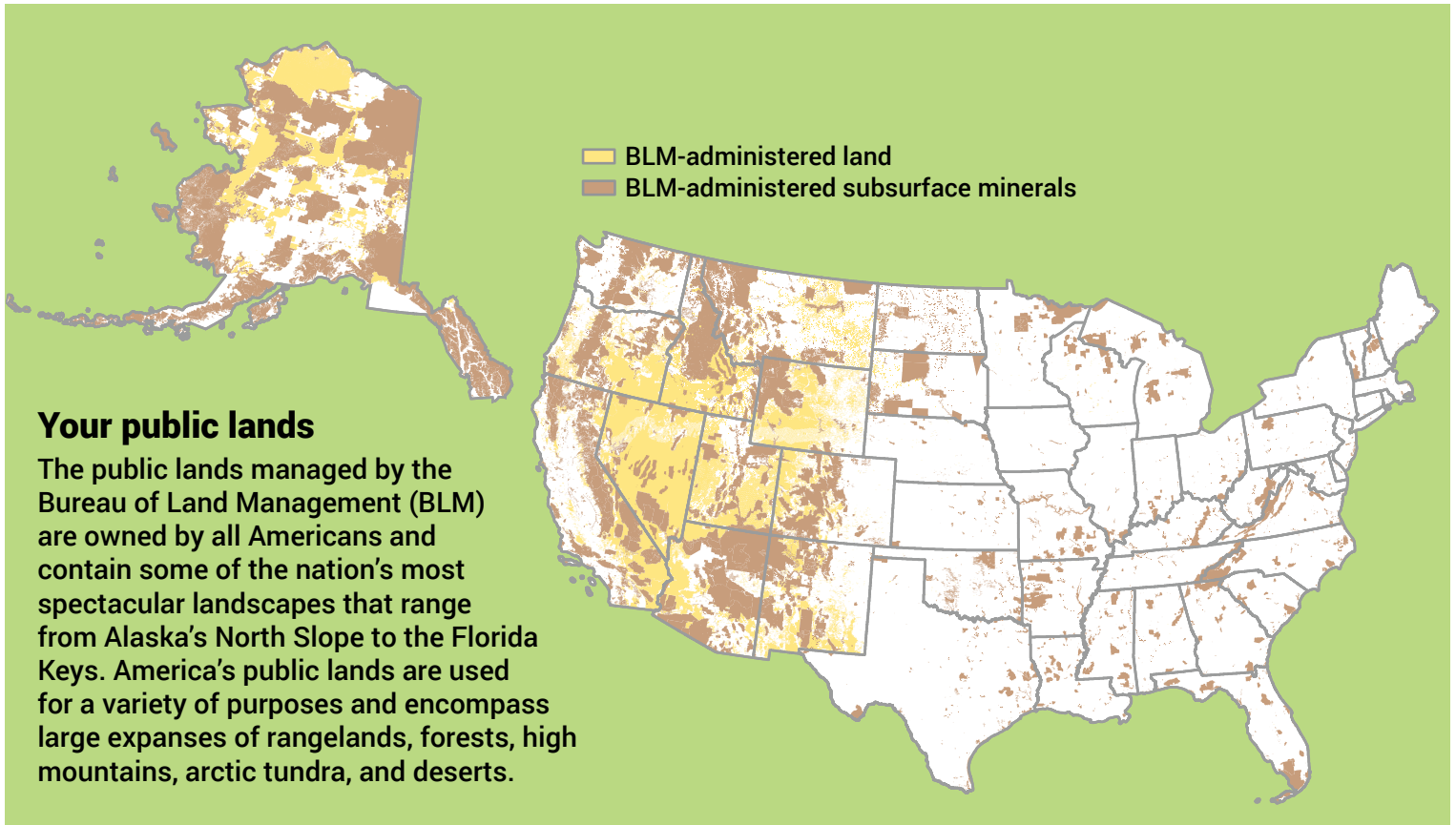




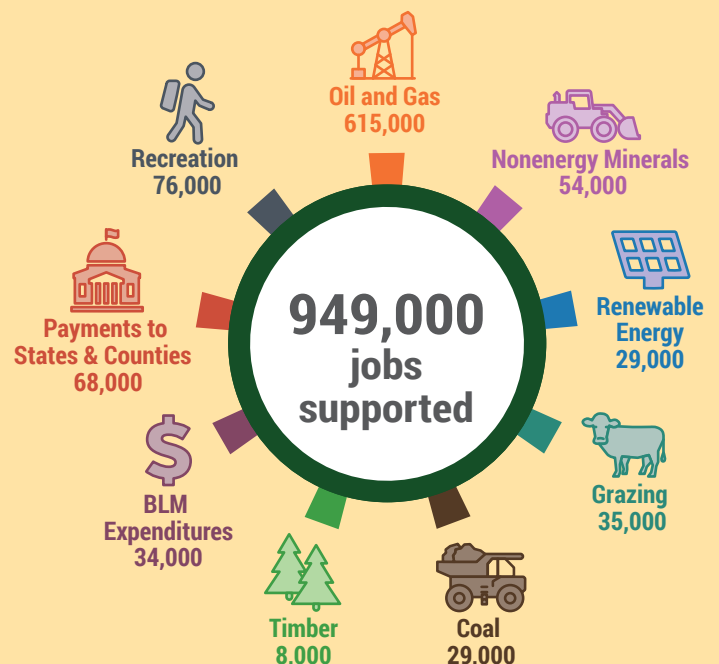
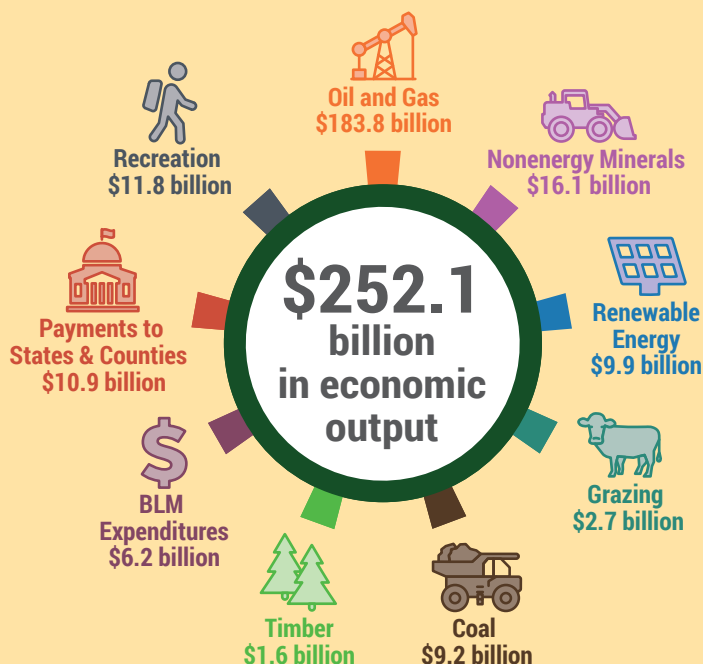
The Bureau of Land Management

manages 10% of the nation's surface area and nearly 30% of the nation's minerals and soils.



Economic contributions from America's public lands

Did you know? The BLM is one of a handful of federal agencies that brings in more revenue than it spends.

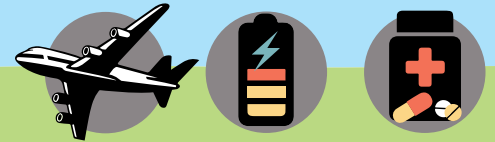


FY 2023 economic data.

Critical mineral extraction

24
surface management
plans of operation

6
surface management
exploration plans



On more than 10,000 acres

These critical minerals can be used in batteries, construction materials, electronics, medicines, metals, military technology, and numerous other products.

Responsible oil and gas production

\$7.7 billion in revenue

514 million barrels of oil produced

From more than 33,700 leases in effect on about 23.2 million acres

States receive 49% of extractive revenues from federal oil and gas leases in that state (with the exception of Alaska, which receives 90%).



Unparalleled outdoor recreation opportunities

Off-highway travel
21.0 million participants

82.3 million visits

Camping and picnicking
20.8 million participants

Specialized sports and activities
18.7 million participants

Hunting and shooting
10.9 million participants

Nonmotorized travel
30.1 million participants

Boating (motorized and nonmotorized)
9.8 million participants

Lands available for grazing

About
245 million
acres of
BLM-managed public lands

155 million
acres authorized for grazing
(There is no cattle grazing in Alaska.)

21,000
allotments

18,000
permits and leases

Fun fact: The BLM has 41 grazing permits for bison and 8 for reindeer.

Wildlife corridor support

With state fish and wildlife agencies and partners, the BLM conserves and restores migration corridors.

Enhanced fish passage
in 59 areas
with culvert and bridge work since 2015.

Coordinated projects on more than
1.6 million acres
to enhance winter range and migration corridors for big game since 2018.

For more information, visit www.blm.gov



@BLMNational



flickr.com/mypubliclands/



mypubliclands.tumblr.com



@mypubliclands



youtube.com/BLMNational



pinterest.com/mypubliclands

January 2025 – based on FY 2023 data